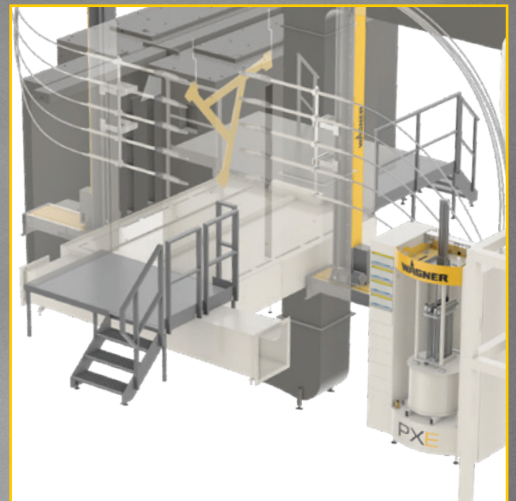




POWDER APPLICATION

SYSTEMS AND SPRAY EQUIPMENT



E-Line Solution

Powder Coating System

The WAGNER E-Line powder system offers excellent coating quality and a quick color change capability with minimal system complexity.

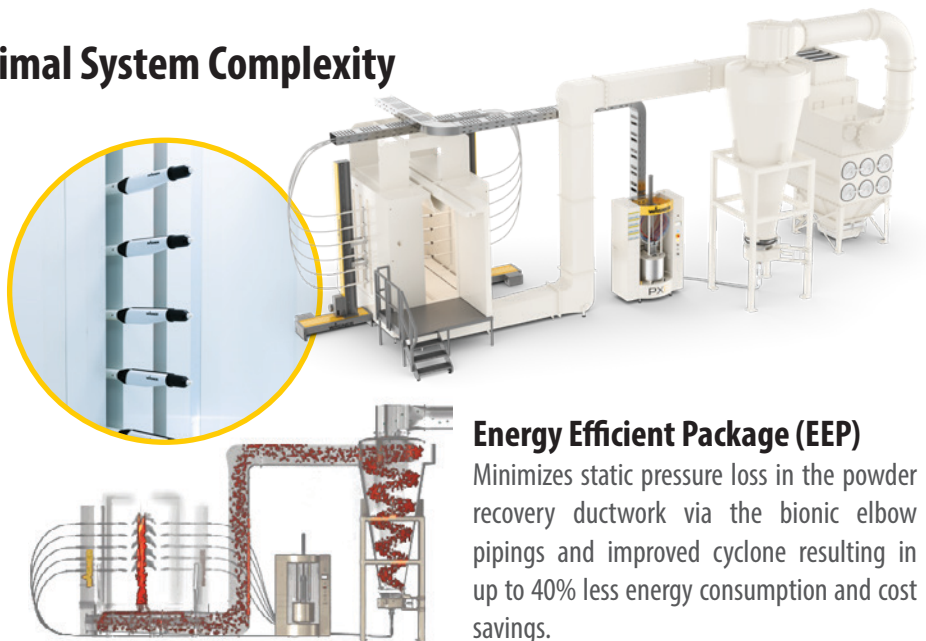


System demo available in Plymouth, MN

Tier 1 System: Designed for Minimal System Complexity

Features

- Smart and easy to use with All-in-One control
- High quality powder application utilizing our powerful PEA-X1 or PER-X1 automatic guns and precise EPG S2 modules
- Fast color change with low investment costs for an excellent price performance ratio
- Efficient & intelligent powder recovery
- Best airflow & highest transfer efficiency thanks to the optimized PVC booth structure & duct design
- Comes in 4 standard sizes with a maximum workpiece size of 2000 x 800 mm
- Available with automated part detection and crash prevention



Energy Efficient Package (EEP)

Minimizes static pressure loss in the powder recovery ductwork via the bionic elbow pipings and improved cyclone resulting in up to 40% less energy consumption and cost savings.

M-Line Solution

Powder Coating System

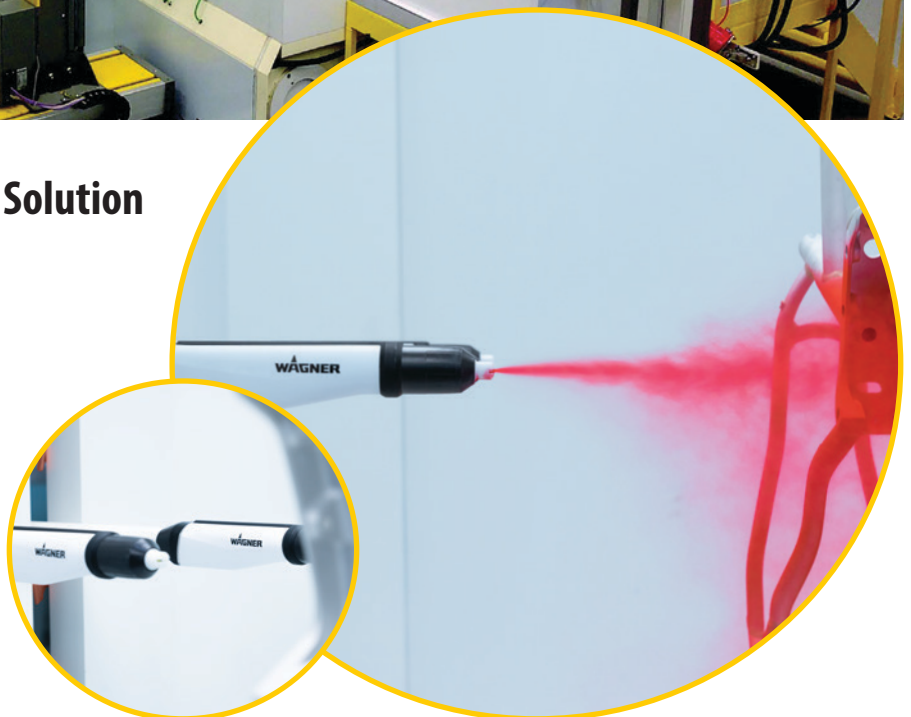
The WAGNER M-Line powder coating application solution offers a mid-level custom solution for providing excellent coating quality and a quick color change capability with minimal system complexity.



Tier 2 System: Mid-Level Custom Solution

Features

- Efficient automatic coating system
- M-Cube PVC booth with maximum work piece size of 2500 x 800 mm
- Quick color change without entering the booth
- Even air flow distribution for highest efficiency and intelligent powder recovery
- Gap, height and depth control
- Best airflow & highest transfer efficiency thanks to the optimized PVC booth structure & duct design
- Available with automated part detection and crash prevention



S-Line Solution

Powder Coating System

The WAGNER S-Line powder coating application solution offers excellent coating quality and a quick color change capability with completely customized solutions in engineering.



System demo available in Plymouth, MN

Tier 3 System: Complete Custom Solution

Features

- Individually designed powder coating system by Wagner's engineering department
- Fast color changes
- Horizontal, vertical and Z-axis capable
- Efficient & intelligent powder recovery
- Variable booth sizes and availability for small to large parts
- Automated part detection and crash prevention
- Best airflow & highest transfer efficiency thanks to the optimized PVC booth structure & duct design



C-Line Solution

Powder Coating System

The WAGNER C-Line powder coating application solution offers effective and efficient wheel coating abilities. This system includes modular components and a moving powder cloud that coats all axis of the wheel.



Specialty System: Wheel Coating Solution

Features

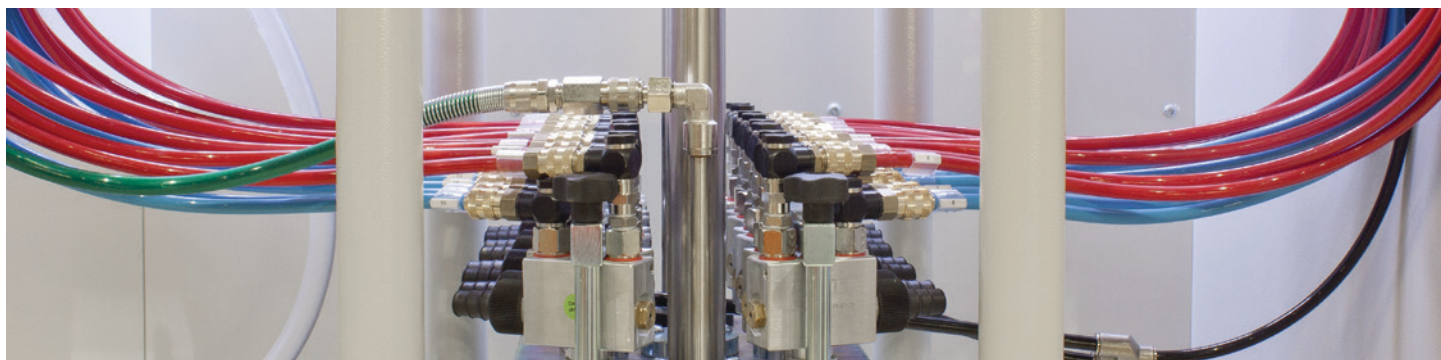
- The most flexible powder coating solution for automotive wheels
- Unique coating process with a moving cloud of powder
- Multiple spray gun arrangements for complex geometries and undercuts
- Flexible 3D axis system
- User friendly control and parameter technology
- Flexible modular design for multiple line configurations
- Robot friendly booth design pre-coatings or complete coating processes



Powder Management Center

Powder Management and Delivery Systems

Powder centers are the heart of any powder coating system. The WAGNER powder centers fulfill all requirements for the powder supply of an automatic coating system and include different options or models to fit any operations needs.



PXE

The WAGNER PXE solution provides standard and cost-effective control of a powder application system from one central location.

- Plug and coat solution
- Increase color change rate
- Increase productivity



PXM

The PXM powder center is a modular powder management and delivery system. Operators can configure the powder application system operation to customer requirements.

- Modular design
- Manual or automatic fresh powder supply

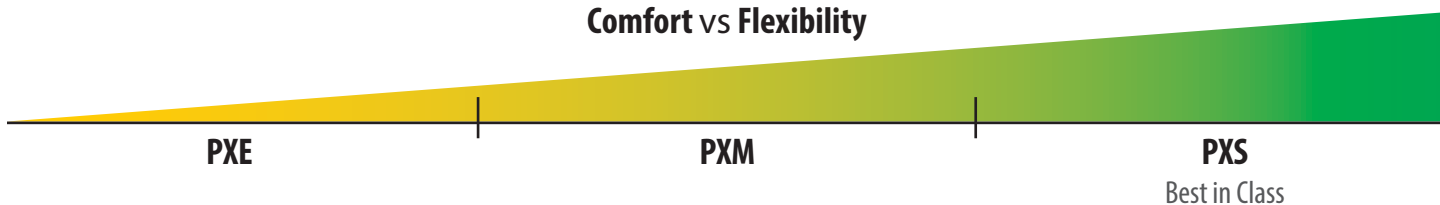


PXS

The PXS powder center utilizes a top of the line all-in-one control system featuring integrated operation and programming.

- Fast and highly automated color changes
- Ultrasonic sieve integration
- Powder consumption measurement

Comfort vs Flexibility



Control Systems

Powder Control Systems

Control technology as a basis for modern and high performance automation solutions in powder coating. Simple to operate, high repeat accuracy and a wide range of functions for efficient powder application are available.



SprayPackE

With the SprayPackE, automatic guns and motion systems in a connected powder booth can be controlled quickly, easily and automatically. As an entry-level device among the WAGNER control units, it is particularly suitable for users who plan to switch from manual application to automatic coating.

- Central control and operating unit
- Efficient spray gun control
- Ready for Industry 4.0
- Various configuration possibilities



ProfiTechM

The ProfiTechM control system is a standardized industrial control system with a comprehensive range of standard functions. Numerous interfaces ensure the integration of the powder feed center, gun controllers, and even the dust collector into the complete production process.

- Modular system
- Simple and safe operation
- Repeatable results
- Centralized system operation
- Quick operation
- 1000 coating recipes

Automatic Powder Guns

Powder Application

Wagner automatic powder coating spray guns provide efficient powder charging along with stable coating results. These spray guns are designed to offer flexible application options to meet all powder coating needs.



PEA-X1 (Automatic)

The basic version of the gun is completed with the optionally available gun holder or an XL extension tube.

- Excellent coating results
- Very thin and uniform coating thickness
- Flexible applications
- Compatibility across the X1 gun families



PER-X1 (Robot)

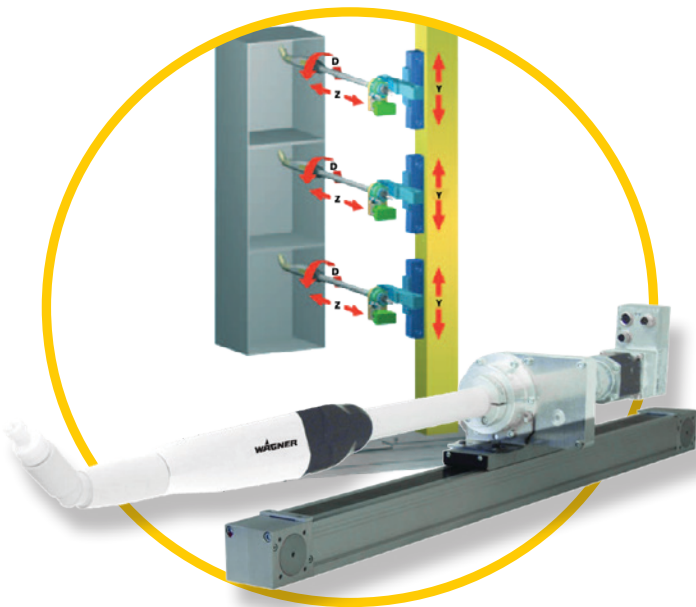
The basic variant must be completed with the optionally available brackets (Single or Twin; Inside or Outside).

- Excellent coating results
- Very thin and uniform coating thickness
- Flexible applications
- Compatibility across the X1 gun families

Motion Control Units

Single and Multi-axis Motion Control

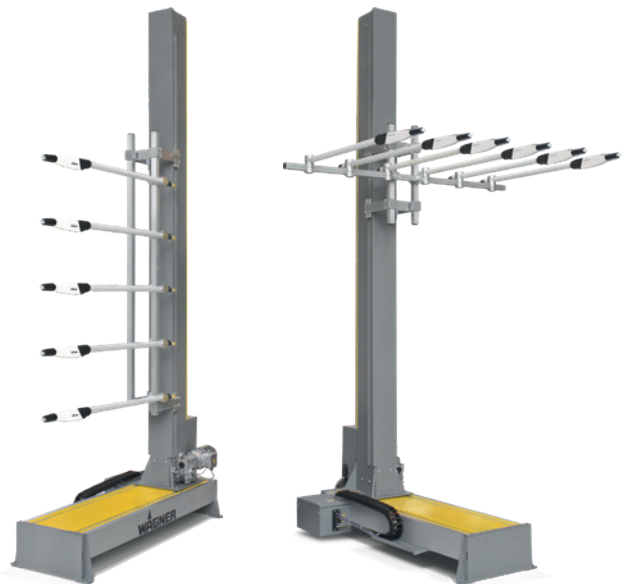
The motion technology is flexibly applicable. Whether long or short strokes, with this technology any motion sequence can be executed with precision and efficiency.



Z-Axis Motion Coating

WAGNER's advanced detection system uses a contour laser scanning system to detect complex object geometries enabling each gun to be aligned to the perfect position. This enables customers to be up to 100% fully automated in coating their workpieces.

- X-axis: for surface and edge coating in sync with conveyance
- Y-axis: for height positioning
- Z-axis: for insertion and retraction



Vertical and Horizontal Motion Units

The reciprocating vertical and horizontal powder gun movers feature maintenance-friendly and robust mechanical construction, low-vibration-movements that ensure a precise, repeatable motion. This is due to the intelligent frequency inverter and long-life toothed belt drive system.

- Flexible application
- Lightweight and robust design thanks to aluminum sections and clearance free precision linear guiding and ball cages

Manual Powder Guns

Powder Application

The Wagner manual powder units combine first-class design and functionality for perfect finishing solutions when coating small, large, or complex work pieces.



PEM-X1 Corona Manual

The WAGNER manual gun PEM-X1 and PEM-X1 cup gun sets the standard and trend for all kinds of surfaces used today in powder coating. Well-balanced ergonomics are based on experience and WAGNER has incorporated this experience into the design of the PEM-X1, combining first-class-design and functionality for perfect finishing solutions.

- Compact and always ready-to-use
- Extremely quick and efficient color change
- User friendly with simple handling and perfect ergonomics
- Time-saving color changes

Sprint 2

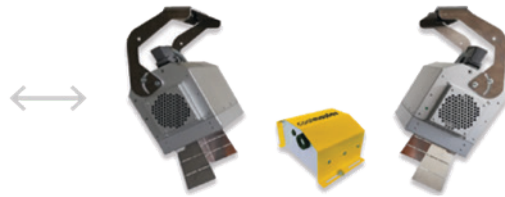
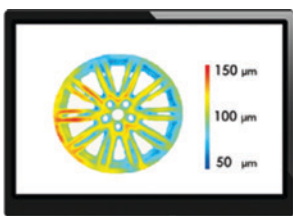
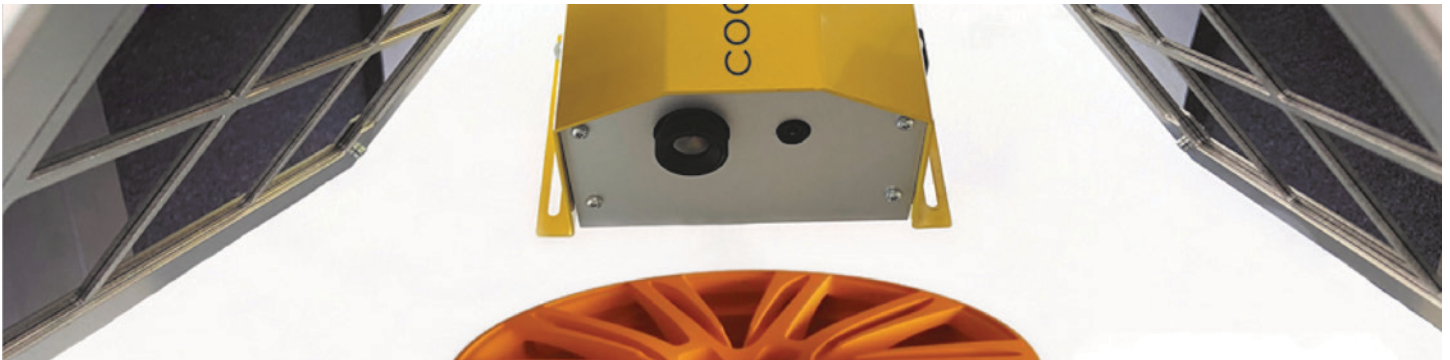
The Sprint 2 manual unit combines increased functionality with a user friendly design. With the new central control unit, all parameters can be set easily. In combination with the new manual gun PEM-X1, the manual unit gives perfect coating results. The powder feeding is carried out directly from the original container – optionally out of the 60l stainless steel container.

- Fully electronic control unit for reproducible results
- Optimized control of powder and air delivery
- Clear and user-friendly operating interface for quickly and easily adjusting the coating parameters
- 50 coating recipes can be saved making it ideal for many color and object changes

Coating Measurement

Powder Measurement Devices

Powder coating measurement can optimize and reduce costs of any operation. Wagner offers non destructive options when it comes to measuring fresh or cured products, ensuring considerable material and cost savings.



Coatmaster and Coatmaster 3D

The Coatmaster enables a non-contact measurement of the coating thickness of powder & liquid paint directly after application. This leads to reduced costs, optimized quality & process reliability.

- Reduce your material consumption by up to 30%
- Immediately find and correct uneven coating thickness distribution
- Document your coating process for you and your customers
- Product coatings with high accuracy and set new quality standards
- Detect and correct deviations early in the process



Wagner Innovation Center

USA Based Powder Lab

Wagner's US based Innovation Center located in Plymouth, Minnesota is now open with lots to offer. Powder coating demonstrations and testing have never been so easy with our new in house installation. Our E-Line powder coating solution will be connected to our IOT platform which will provide users with available access from all over the world. The S-Line complimented with the PXS powder center, Z-Axis coating stations and robot touch up area can demonstrate installations with up to 100% automatic coating of parts. As a nice finishing touch, Wagner's coating measurement device is mounted inline for final coating measurements and quality assurance.



For more information or to check available dates and times for demonstrations, please contact [Wagner Industrial Solutions](#).

Innovation Center Demo Features

- E-Line
- S-Line
- Coatmaster
- IOT (Internet of Things)
- Z-Axis coating
- Robotic touch up



Wagner Spray Tech Corporation - Industrial Solutions

Plymouth, MN
1770 Fernbrook Lane
Plymouth, MN 55447
1 888 473 2524

Louisville, CO
337 South Arthur Ave
Louisville, CO 80027
1 888 820 4498

iscustomerservice@wagner-group.com